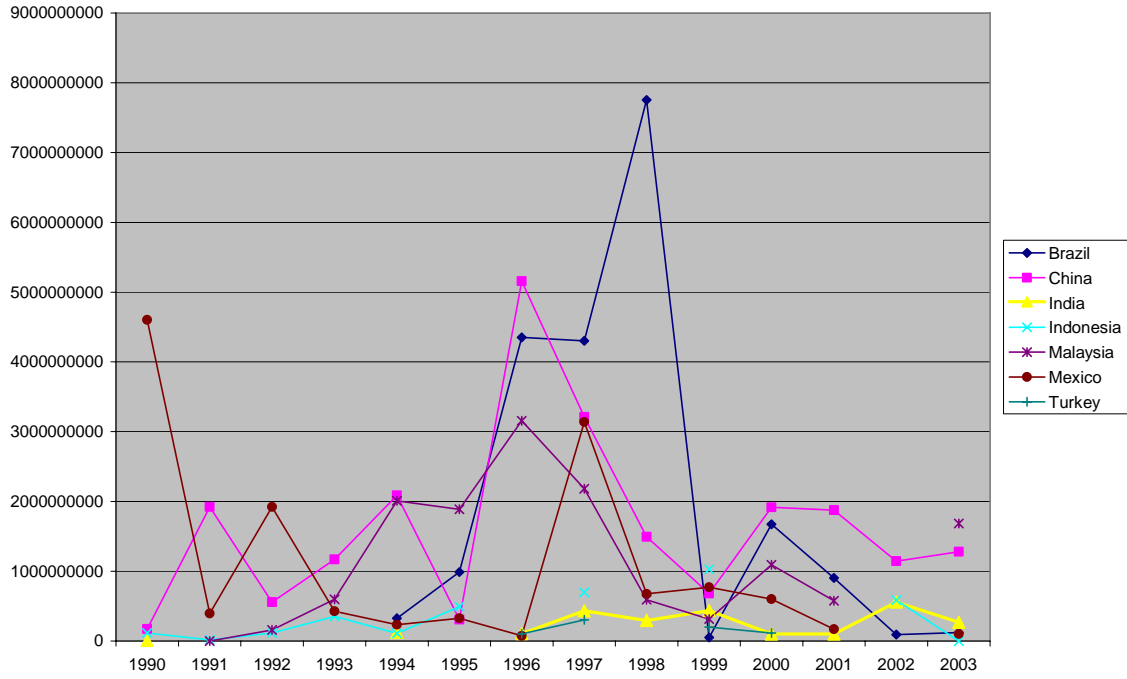


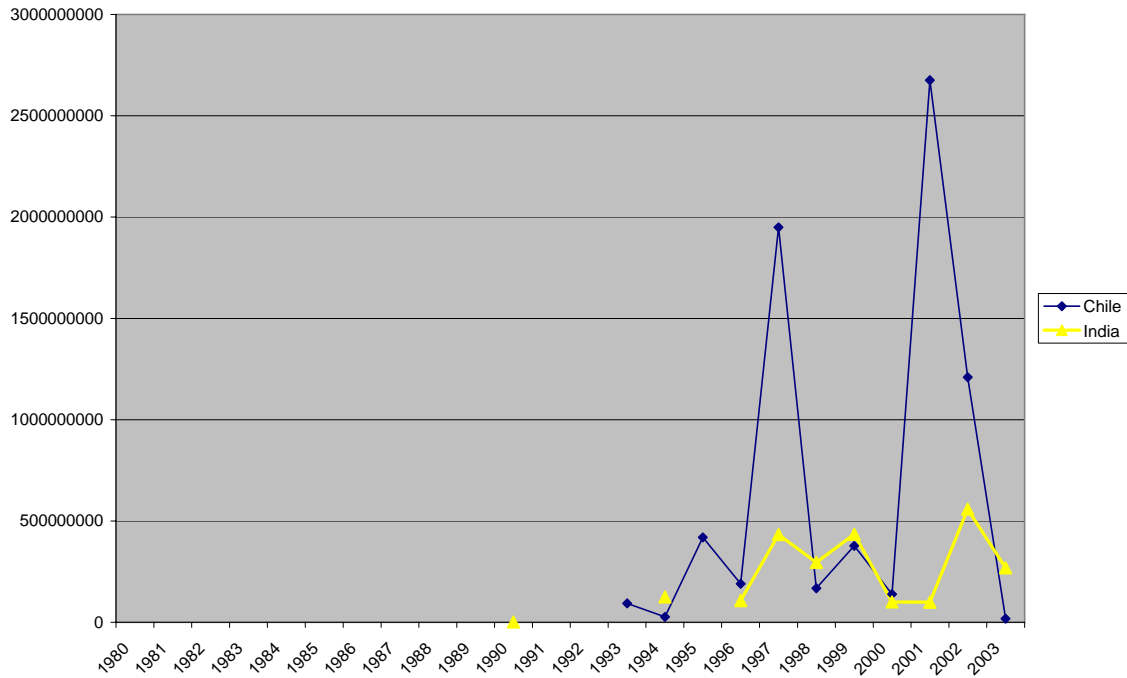
Infrastructure Data

Transport Sector

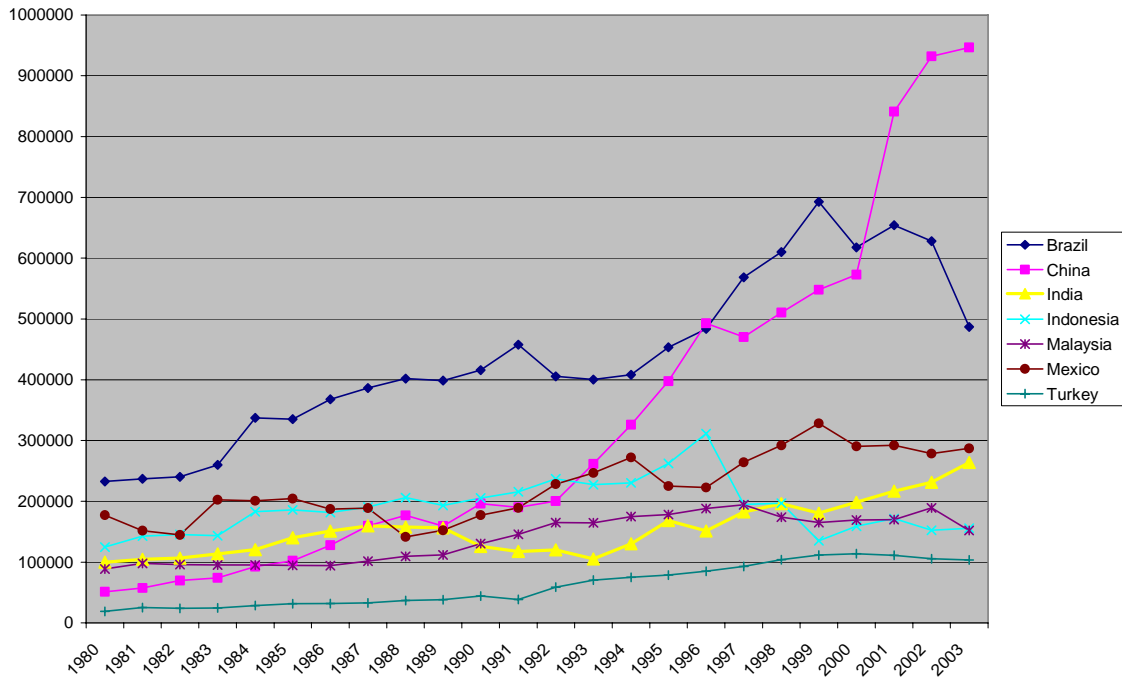
Private investment in transport (current US\$)



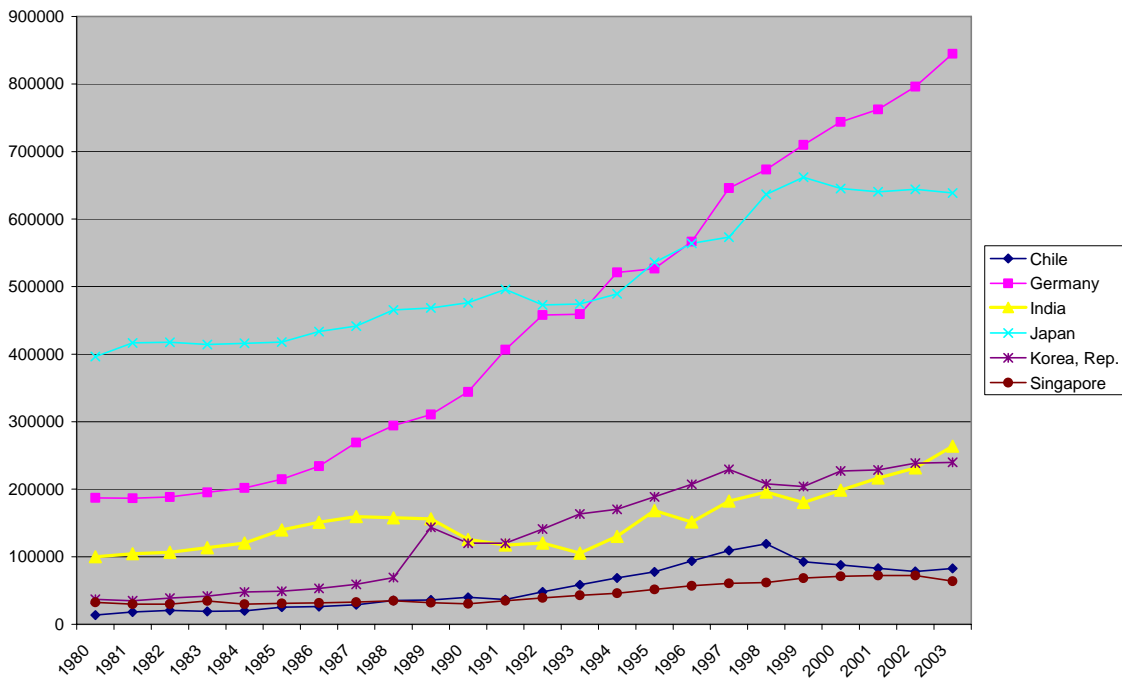
Private investment in transport (current US\$)



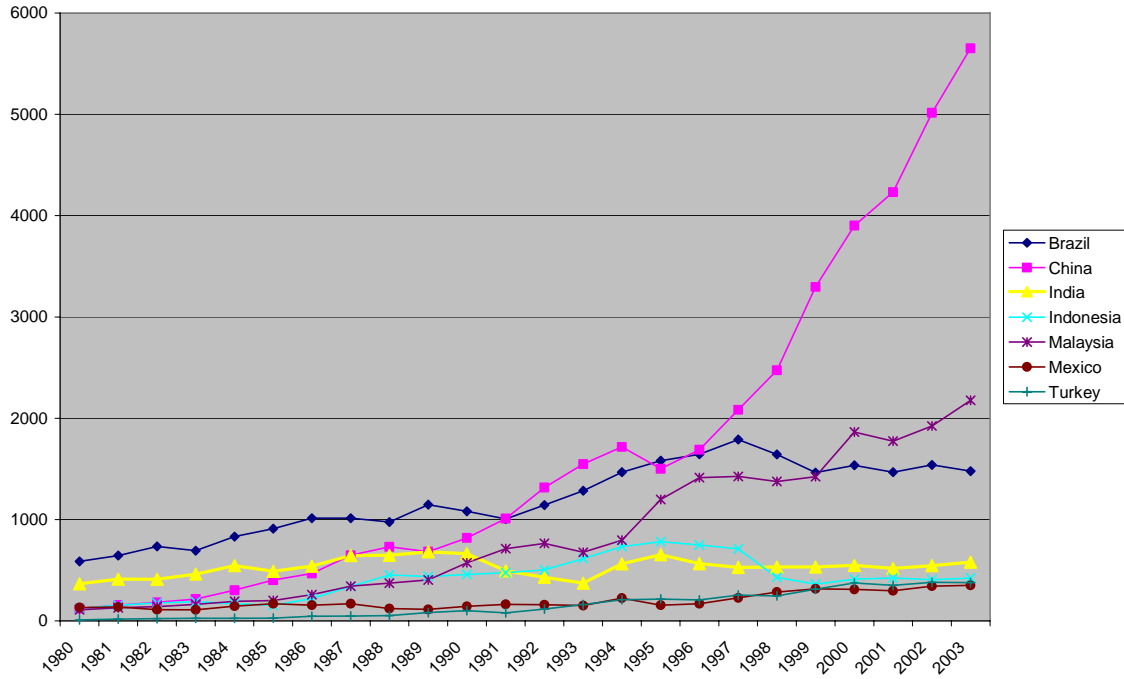
Aircraft departures



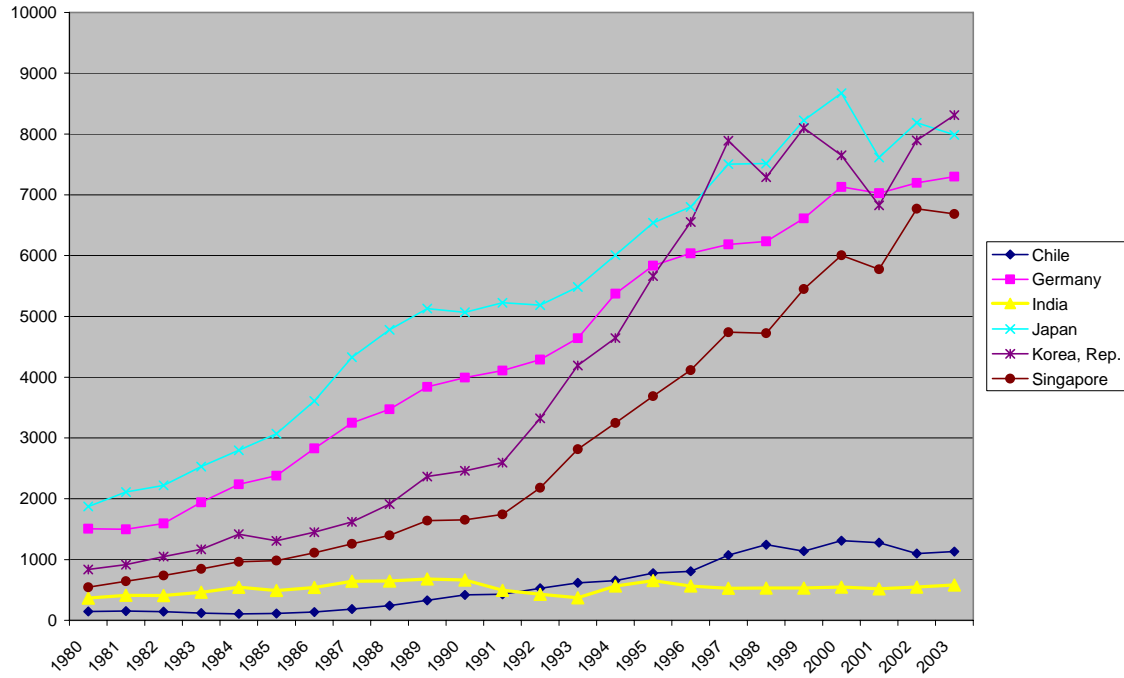
Aircraft departures



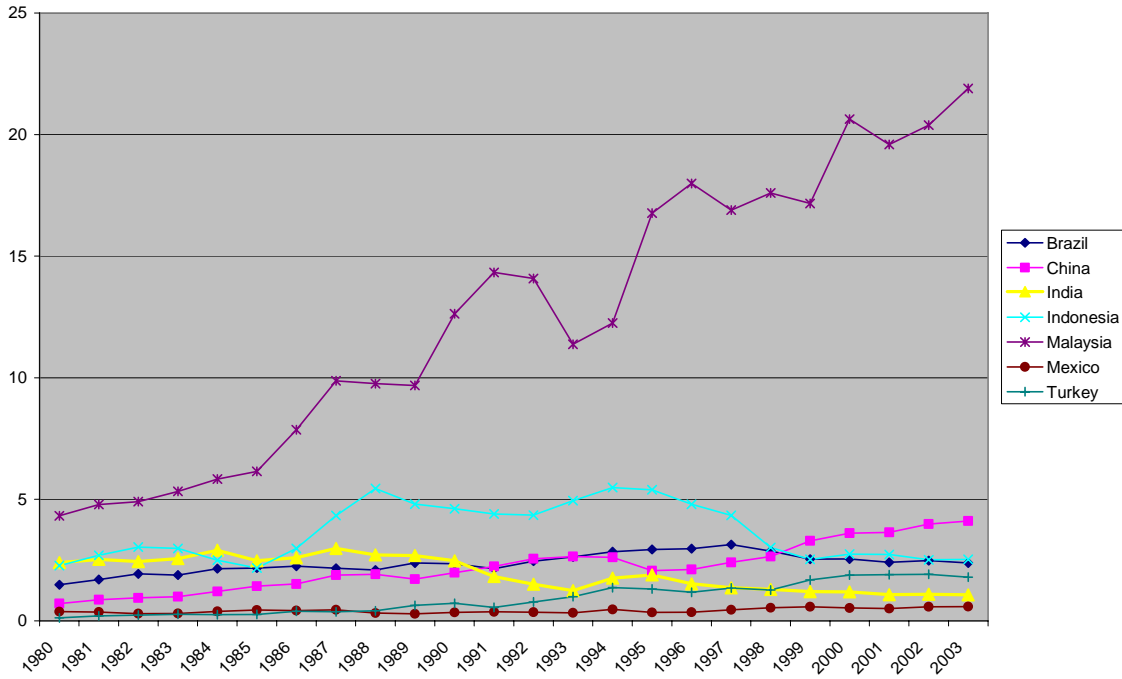
Air transport, freight (million ton-km)



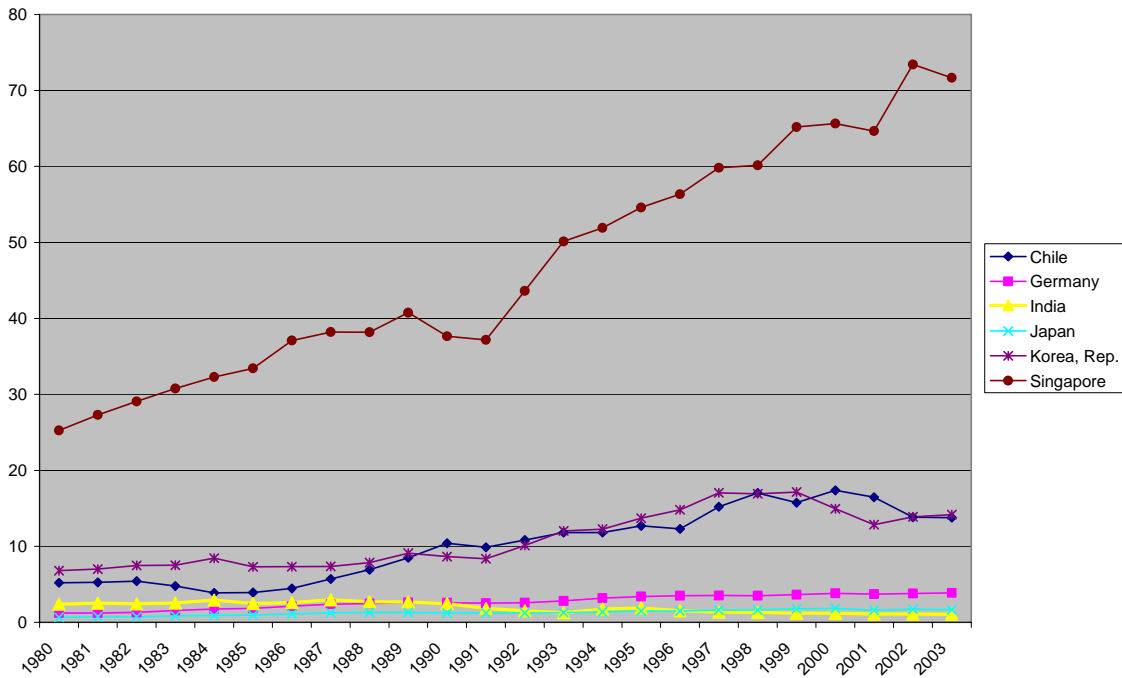
Air transport, freight (million ton-km)



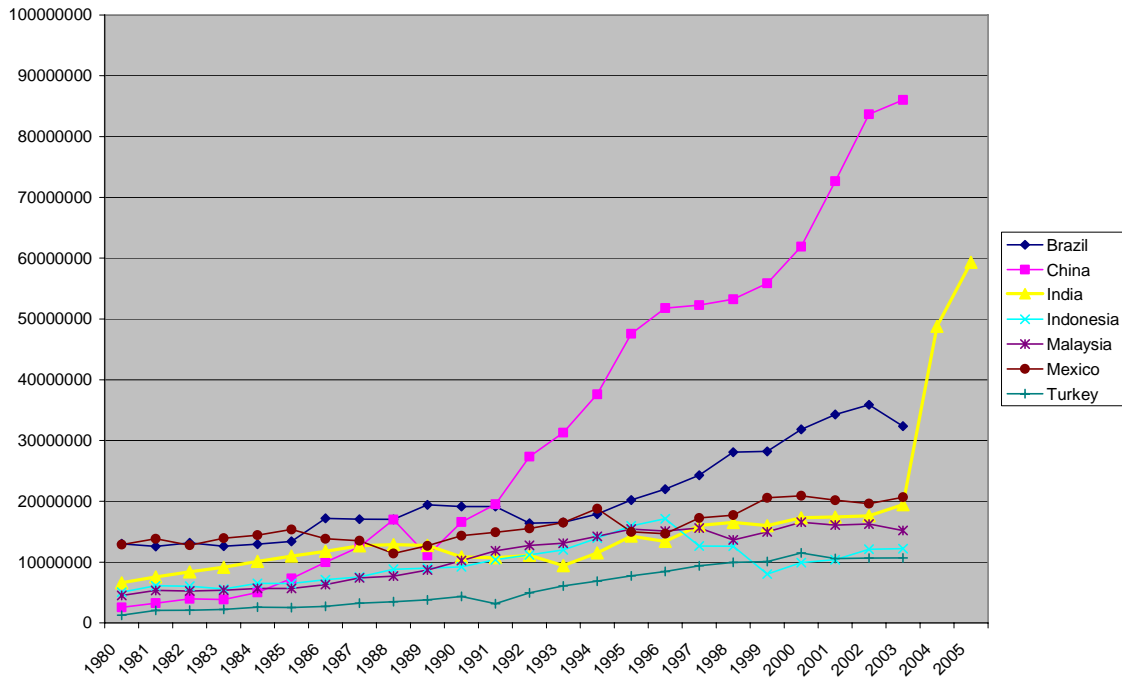
Air transport, freight per GDP (million ton-km per const 2000 \$)



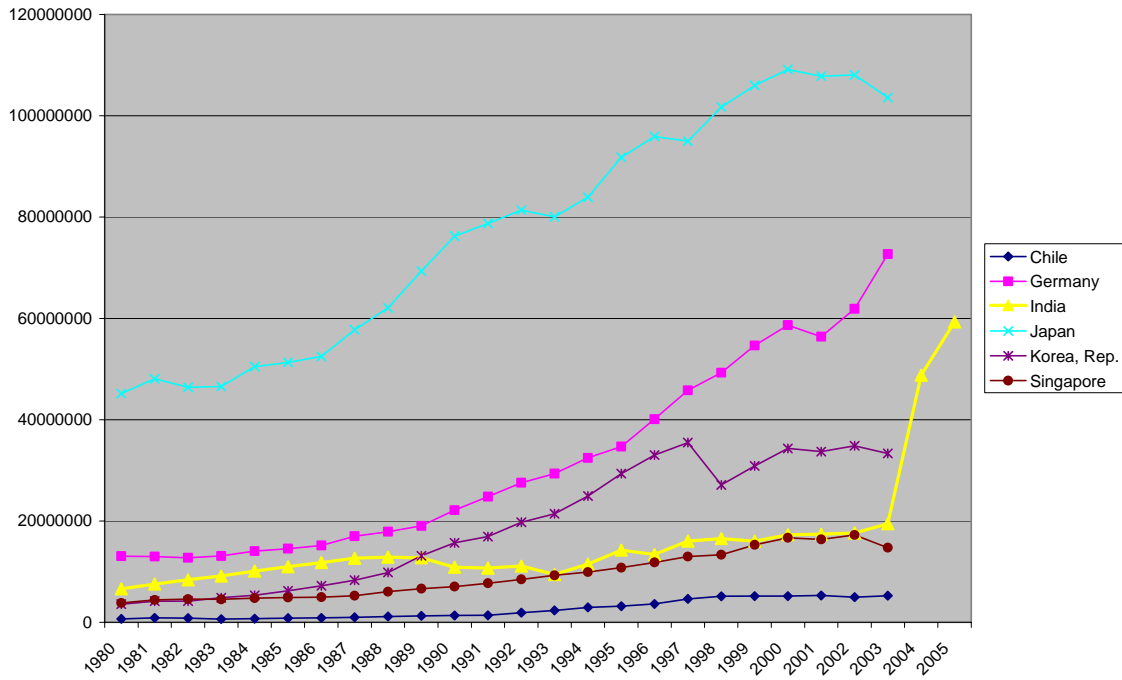
Air transport, freight per GDP (million ton-km per billion const 2000 \$)



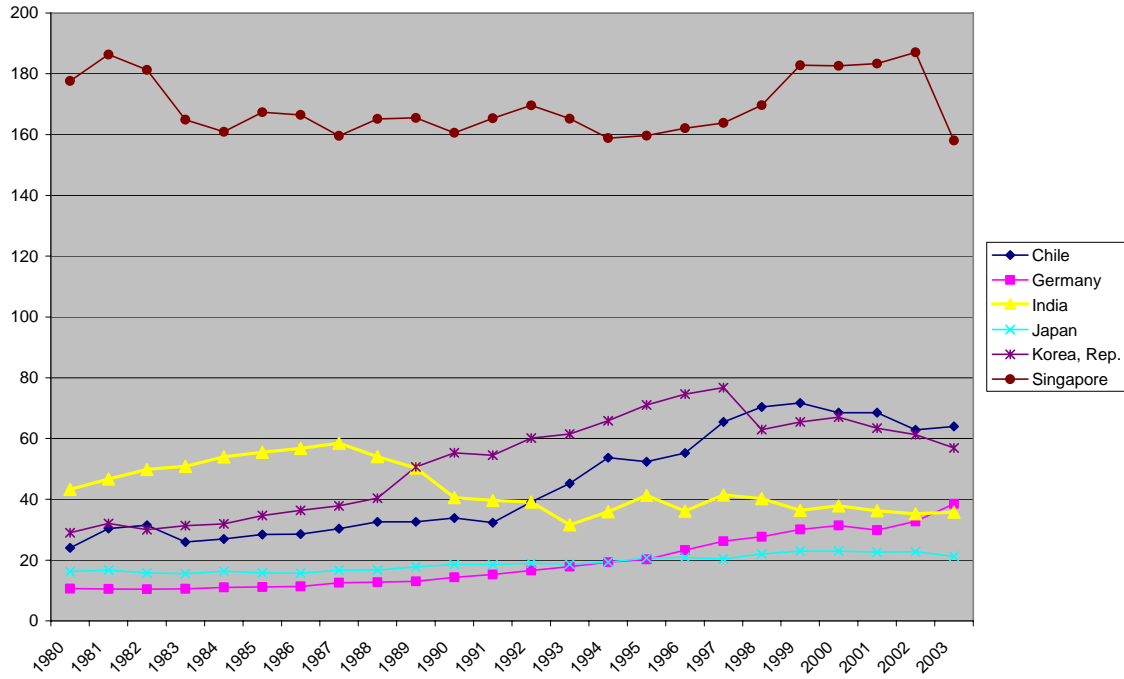
Air transport, passengers carried



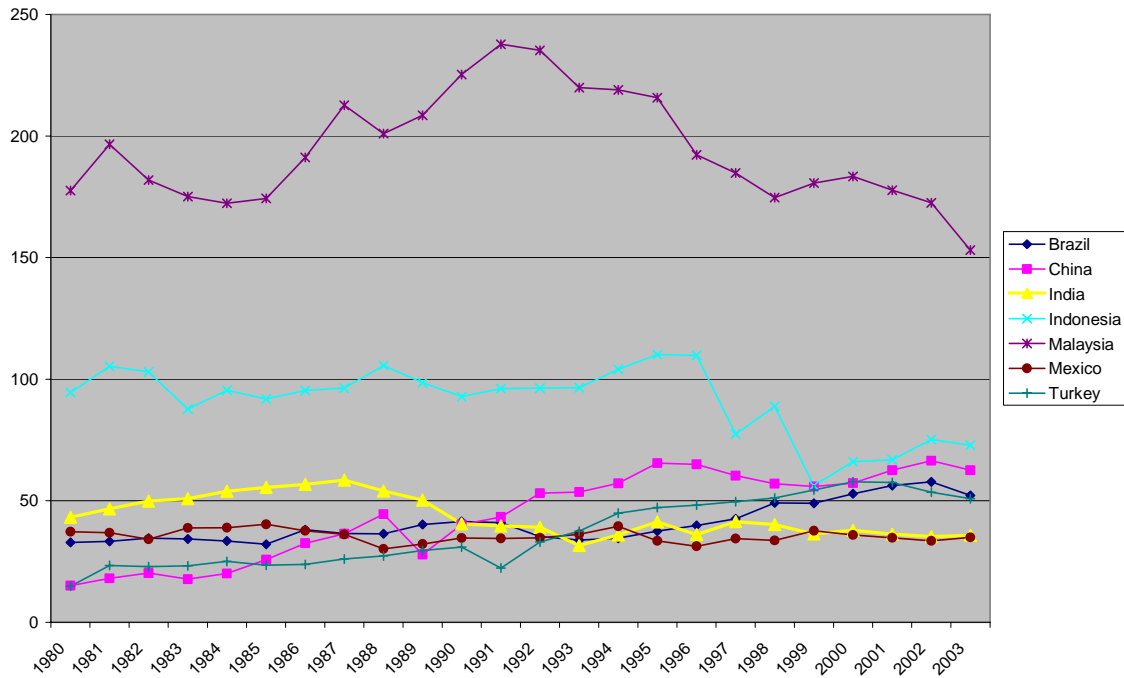
Air transport, passengers carried



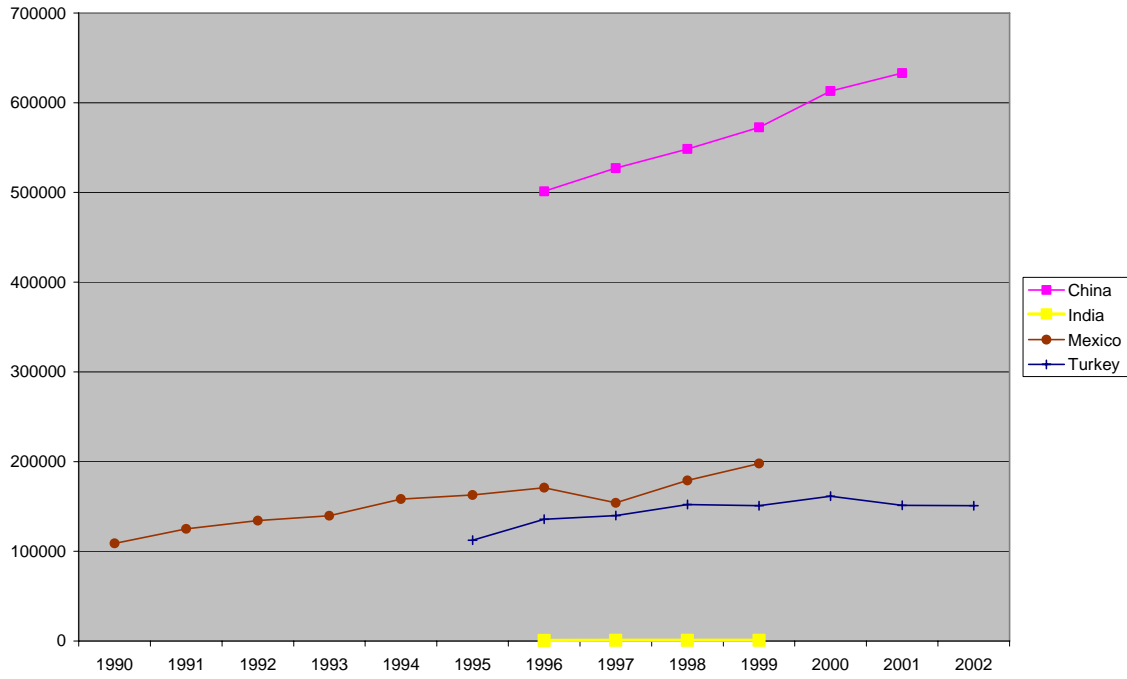
Air transport, passengers carried per GDP (per mn const 2000 \$)



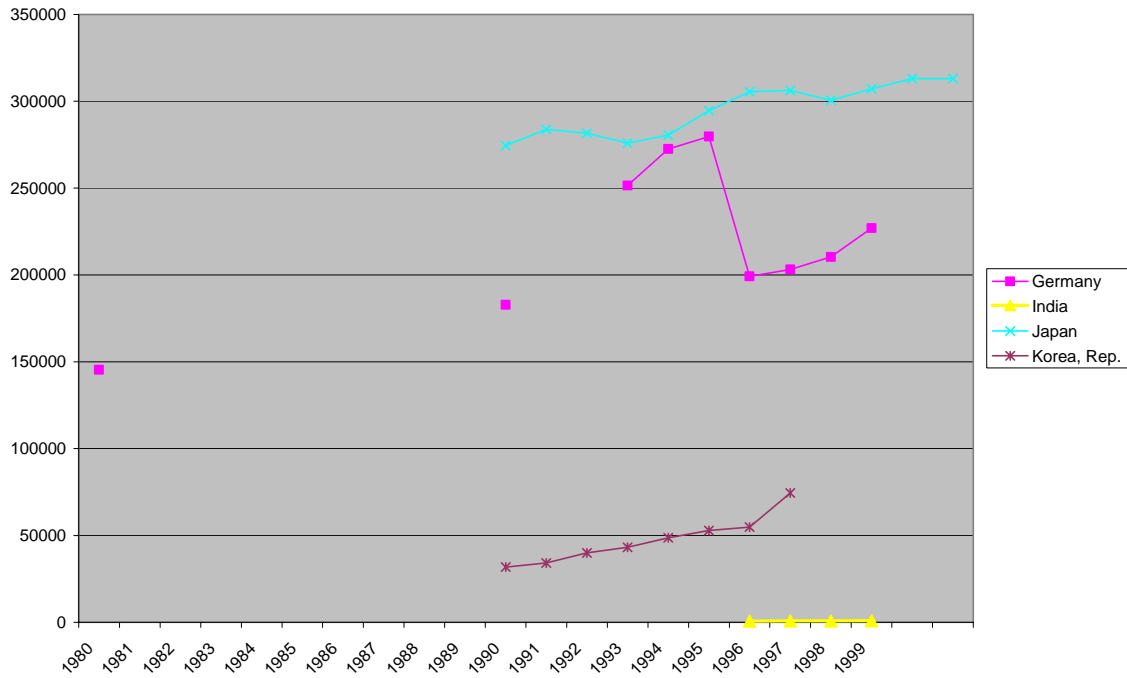
Air transport, passengers carried per GDP (per mn const 2000 \$)



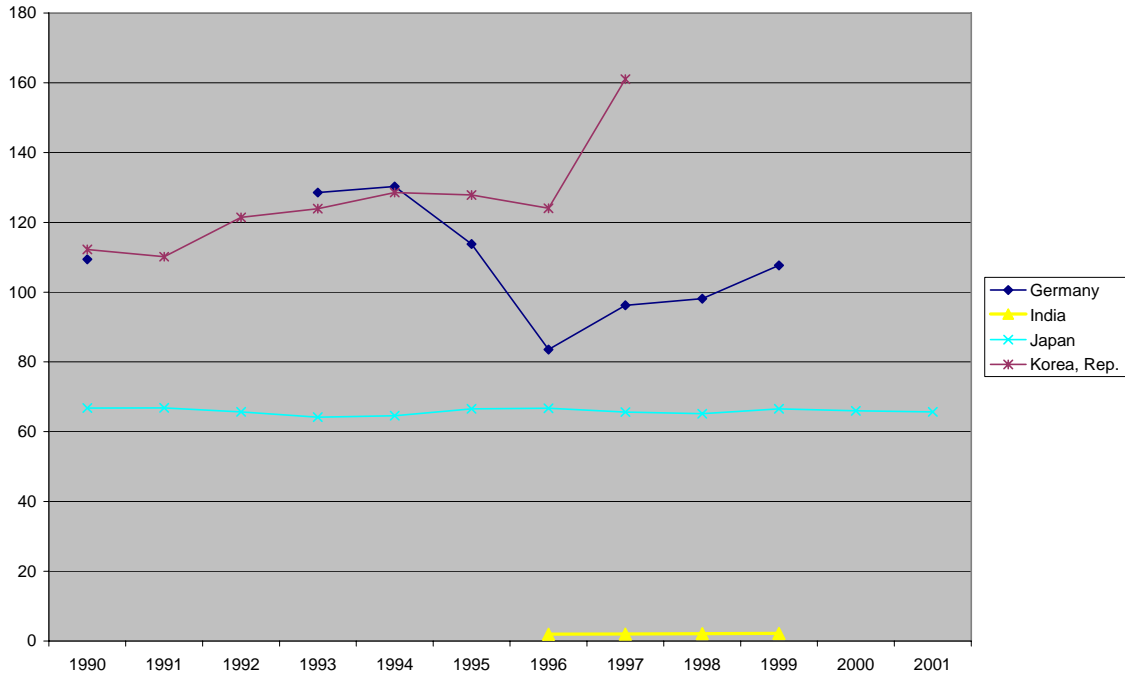
Roads, goods transported (million ton-km)



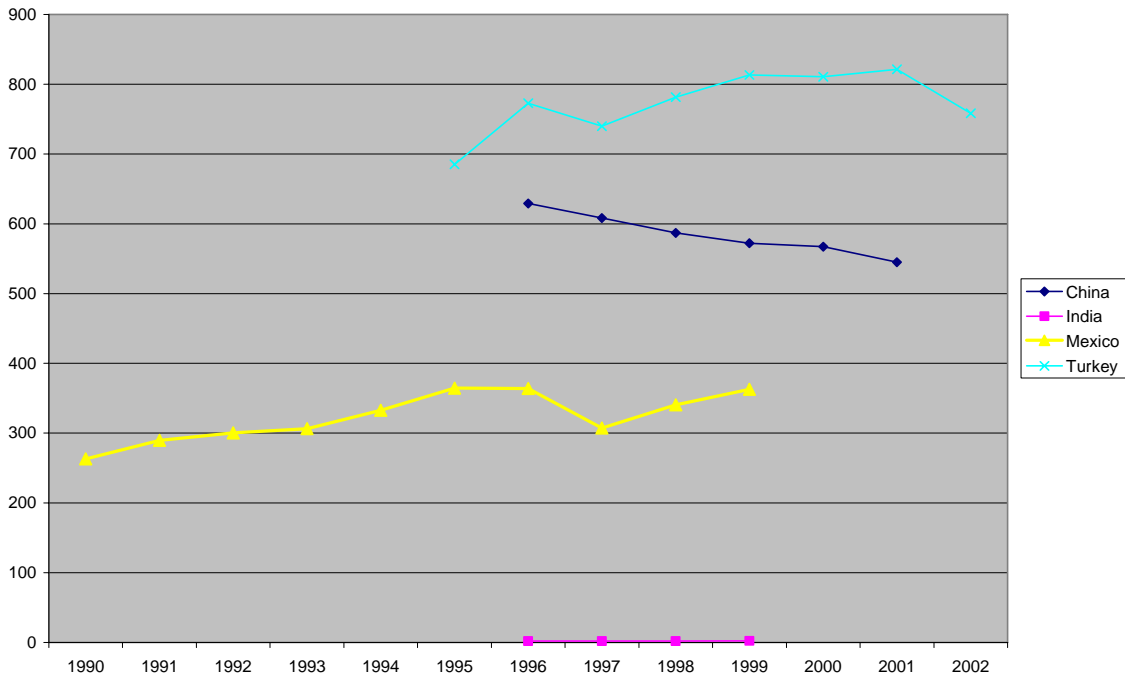
Roads, goods transported (million ton-km)



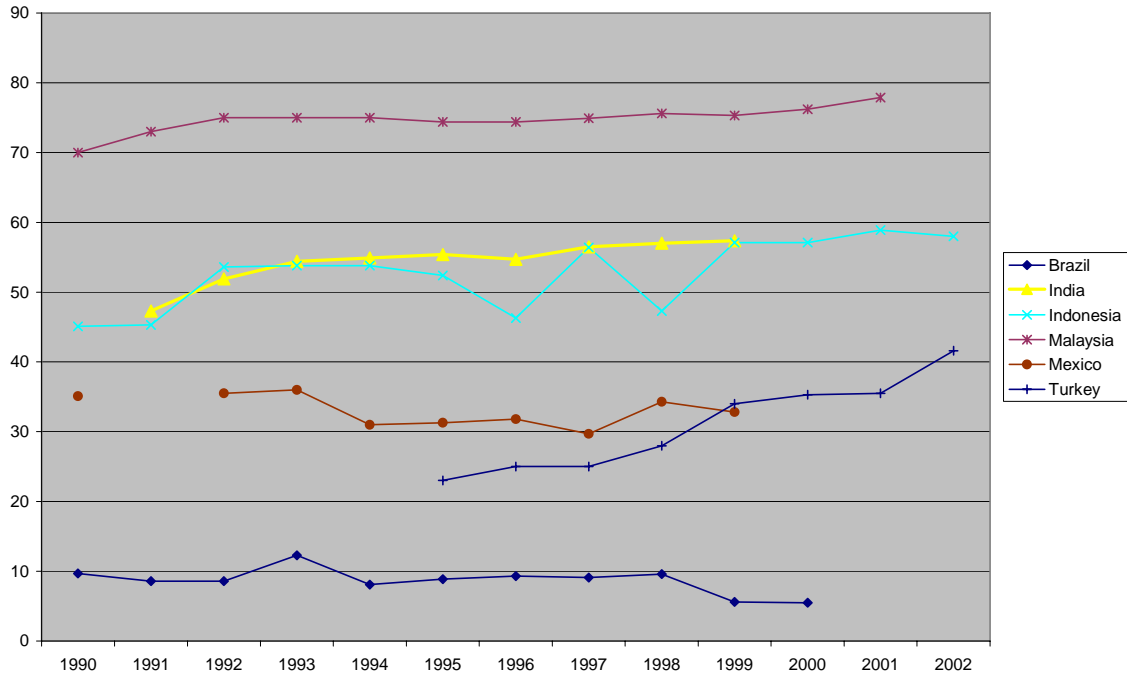
Roads, goods transp. per GDP (million ton-km per billion const 2000 \$)



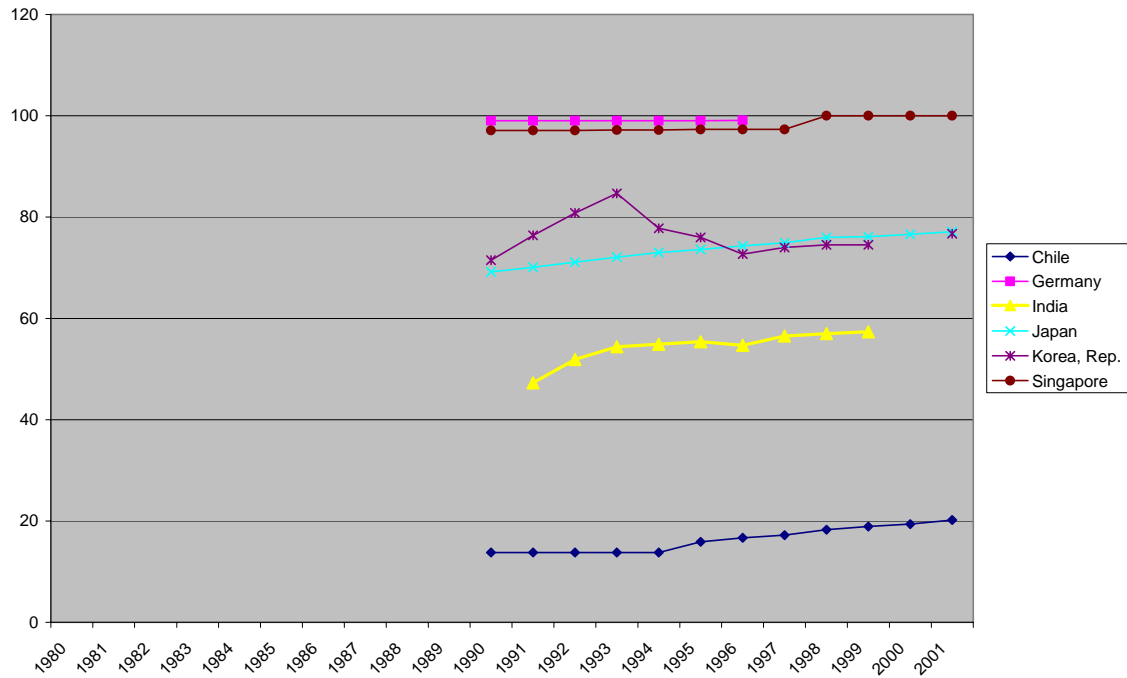
Roads, goods transp. per GDP (million ton-km per billion const 2000 \$)



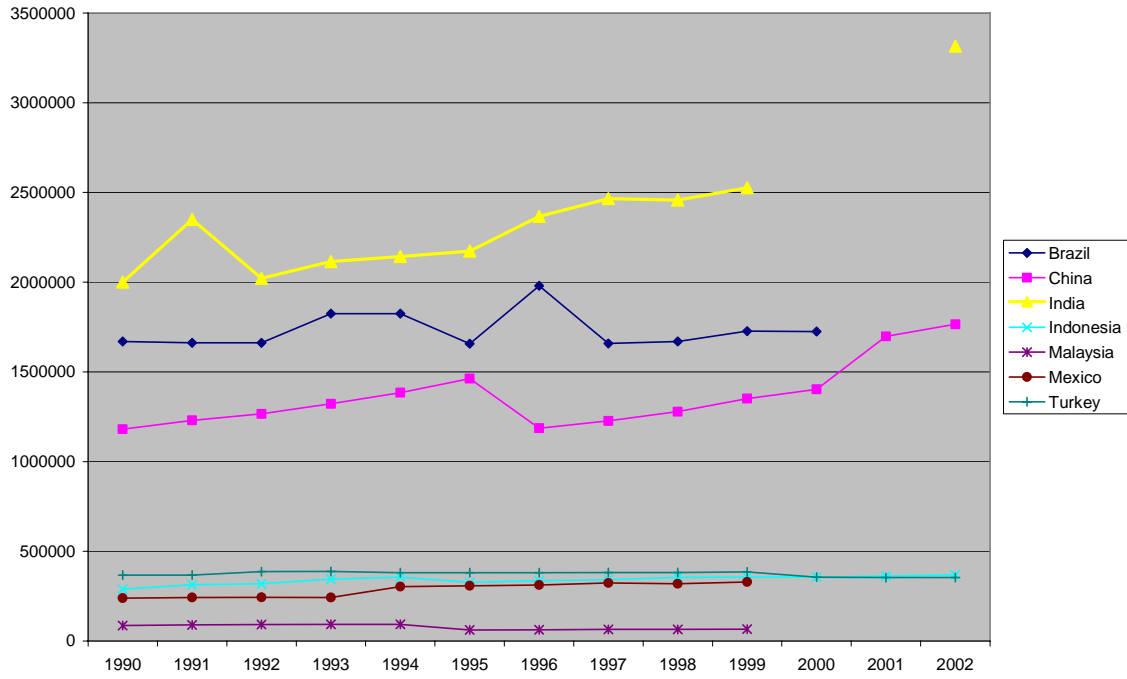
Roads, paved (% of total roads)



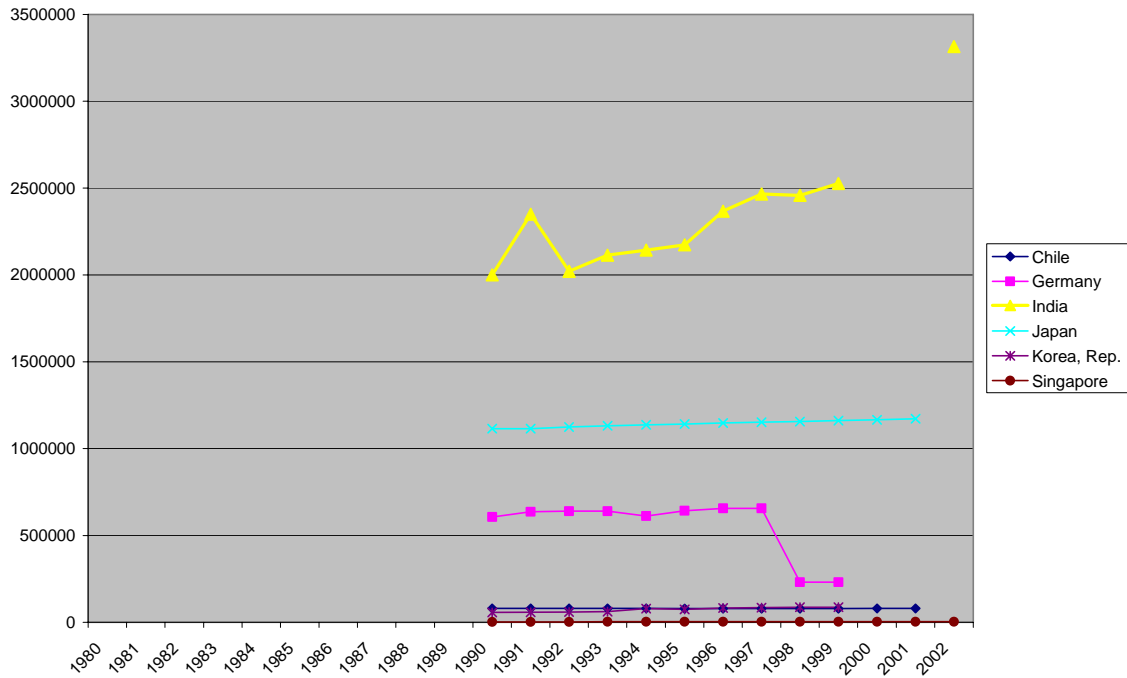
Roads, paved (% of total roads)



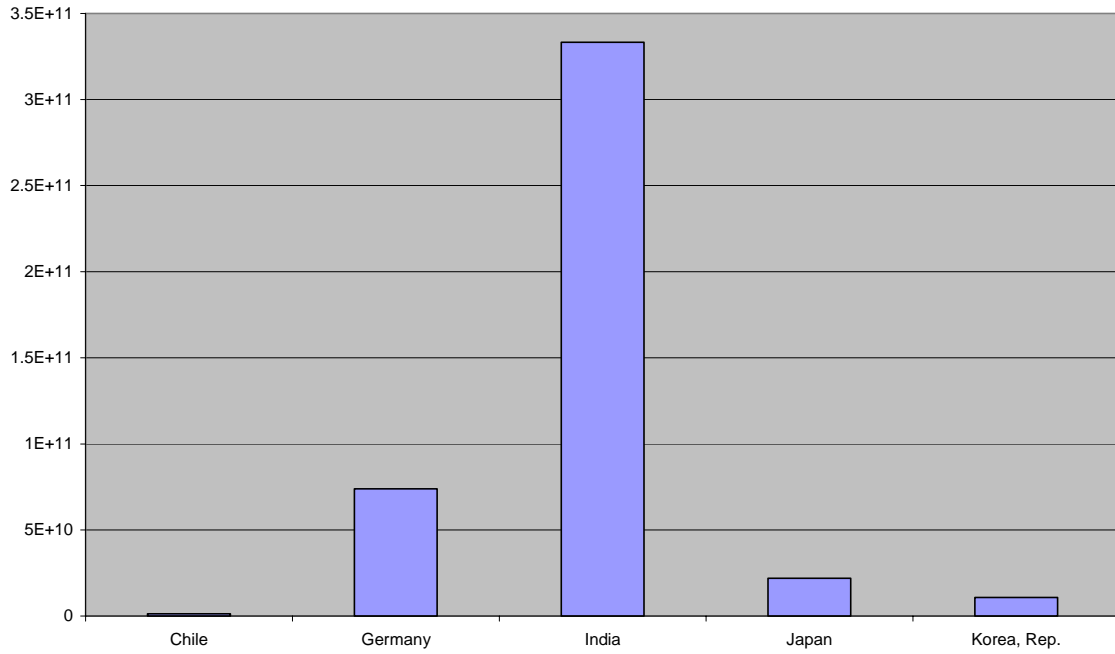
Roads, total network (km)



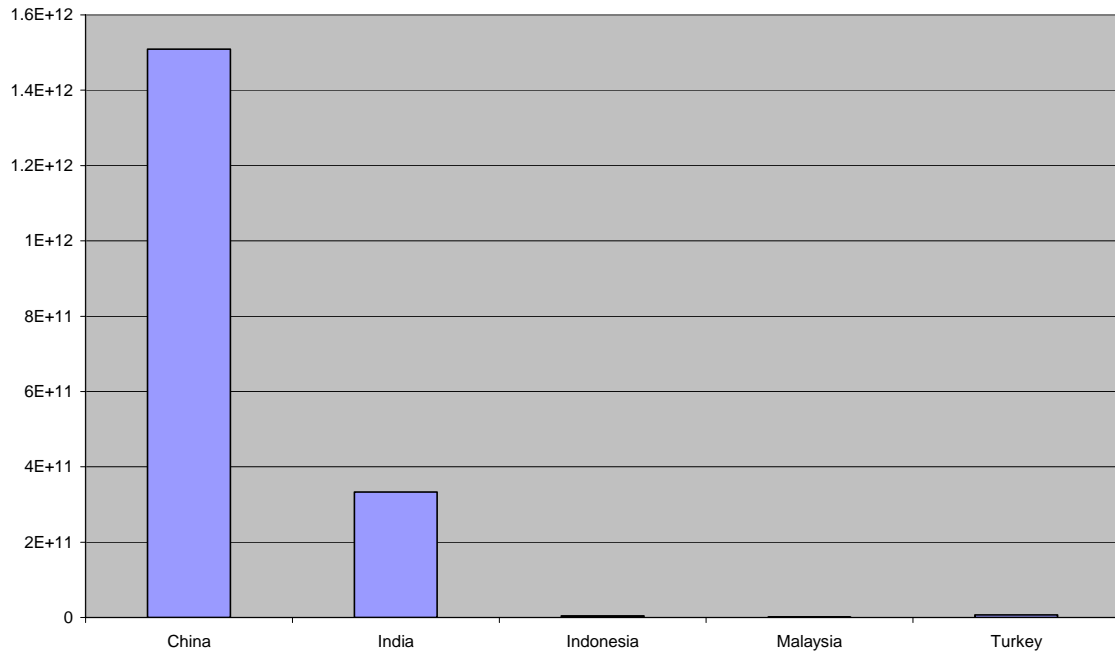
Roads, total network (km)



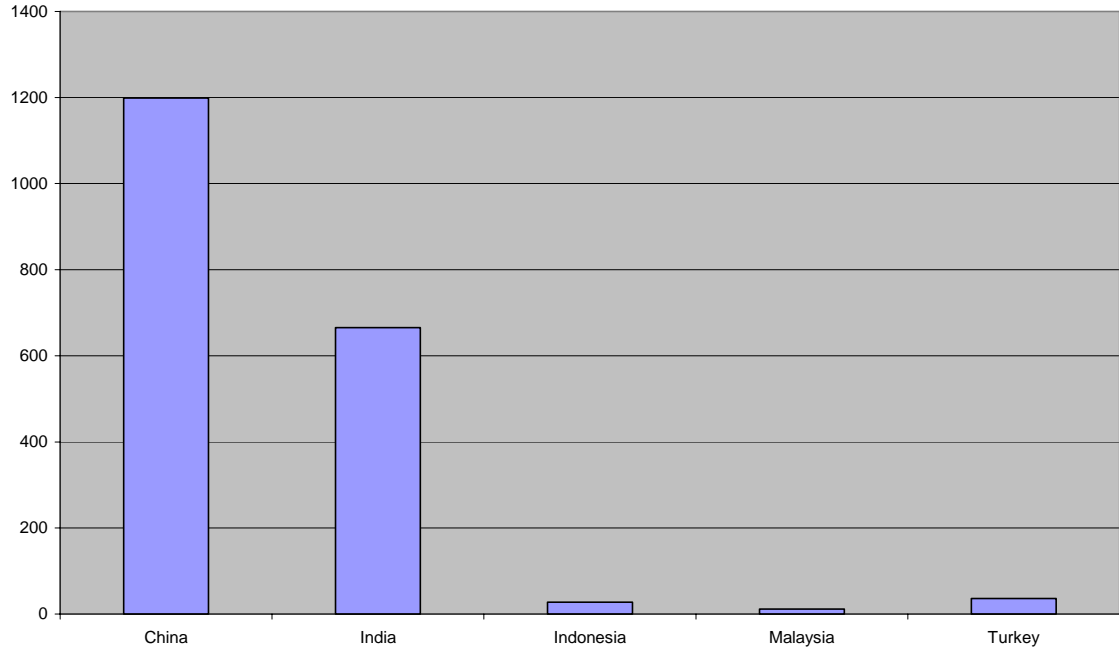
**Railways, goods hauled (ton-km)
2002 (2003 for Chile)**



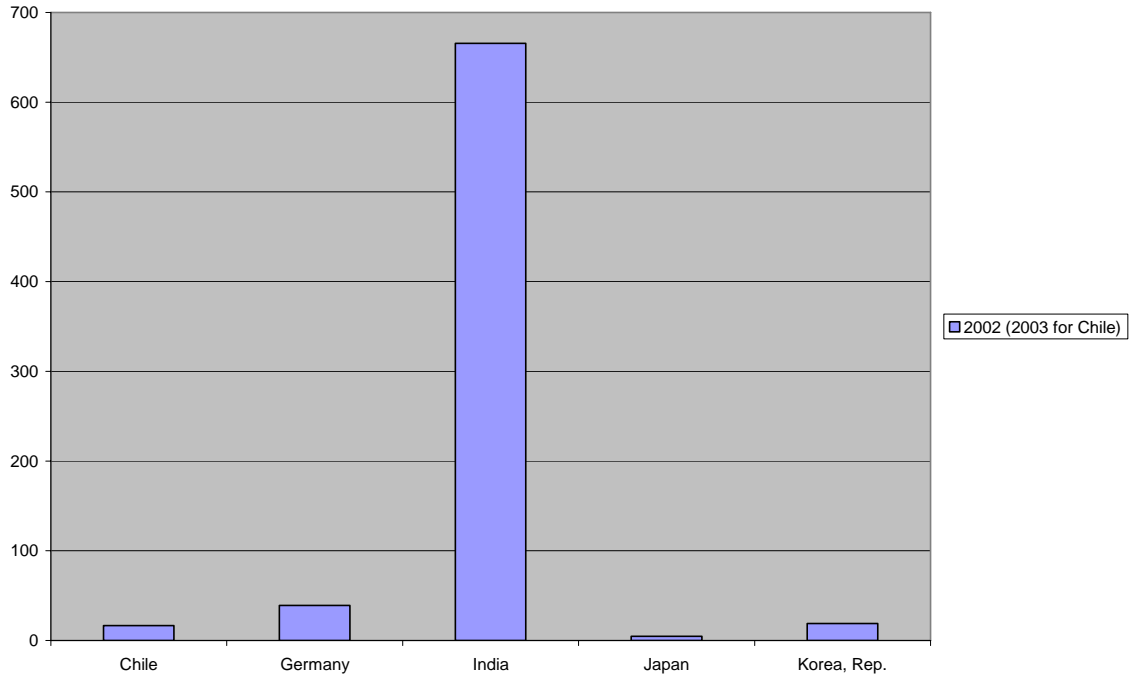
**Railways, good hauled (ton-km)
2002 (2003 for Indonesia, Malaysia)**



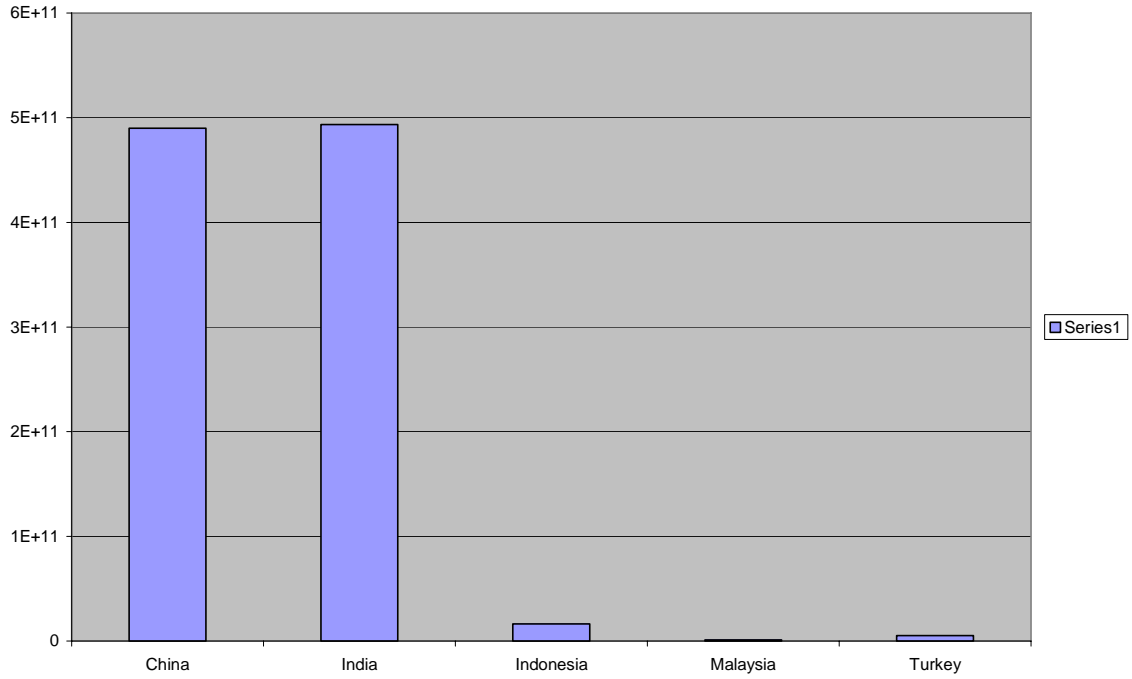
**Railways, good hauled per GDP (ton-km per thous const 2000 \$)
2002 (2003 for Indonesia, Malaysia)**



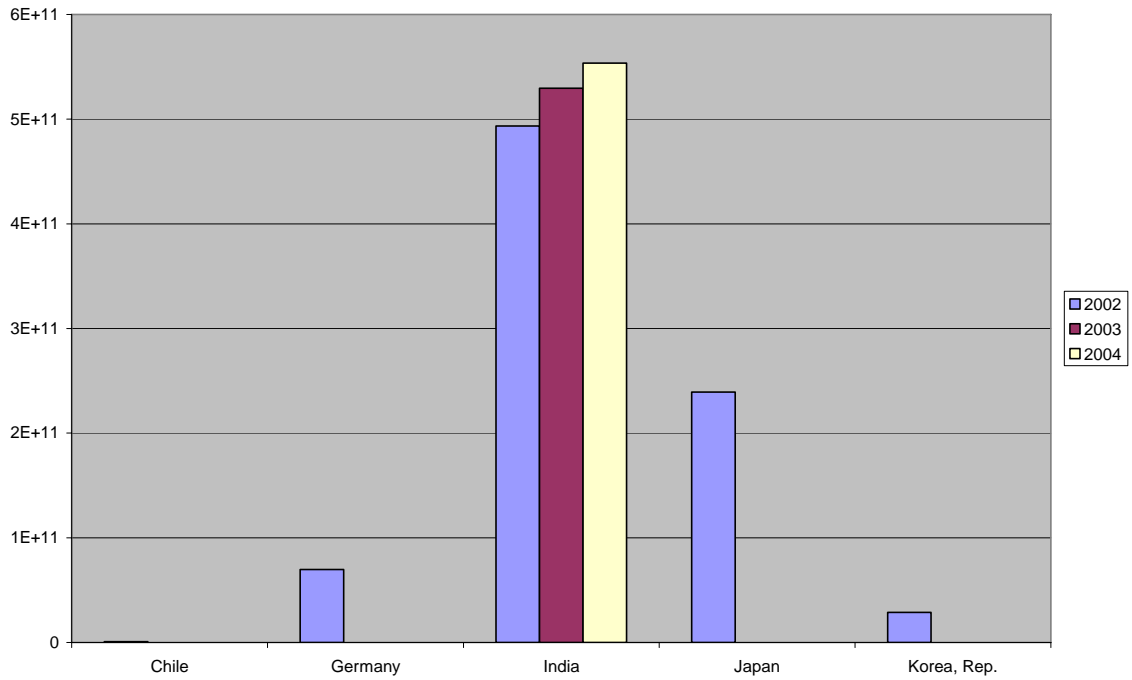
Railways, good hauled per GDP (ton-km per thous const 2000 \$)



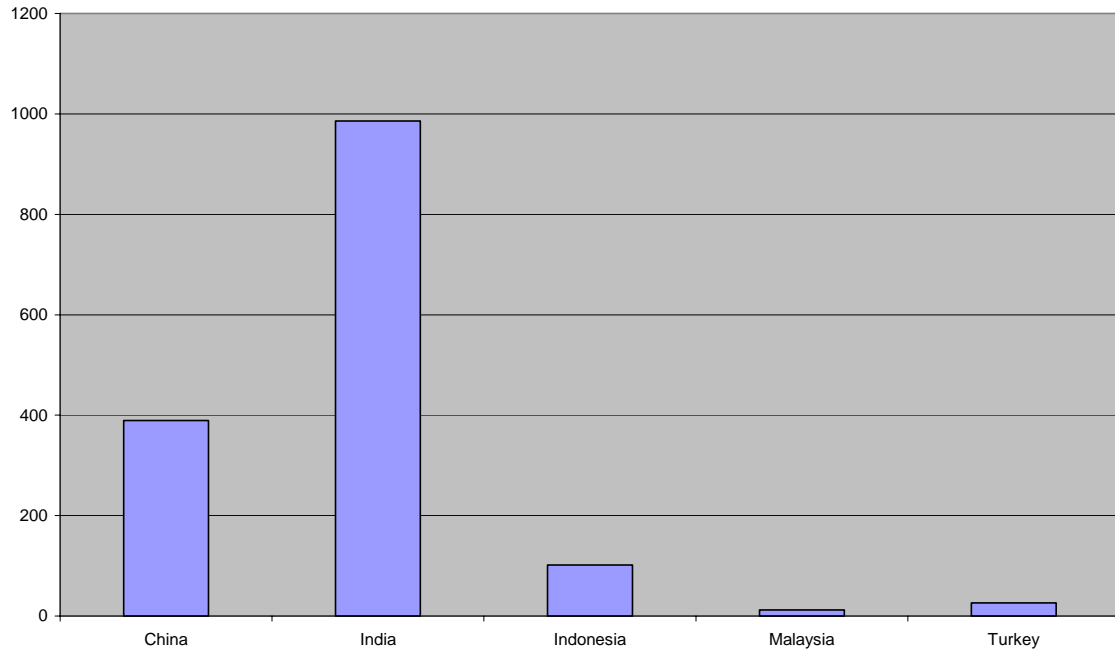
Railways, passengers carried (passenger-km) 2002 (2003 for Indonesia)



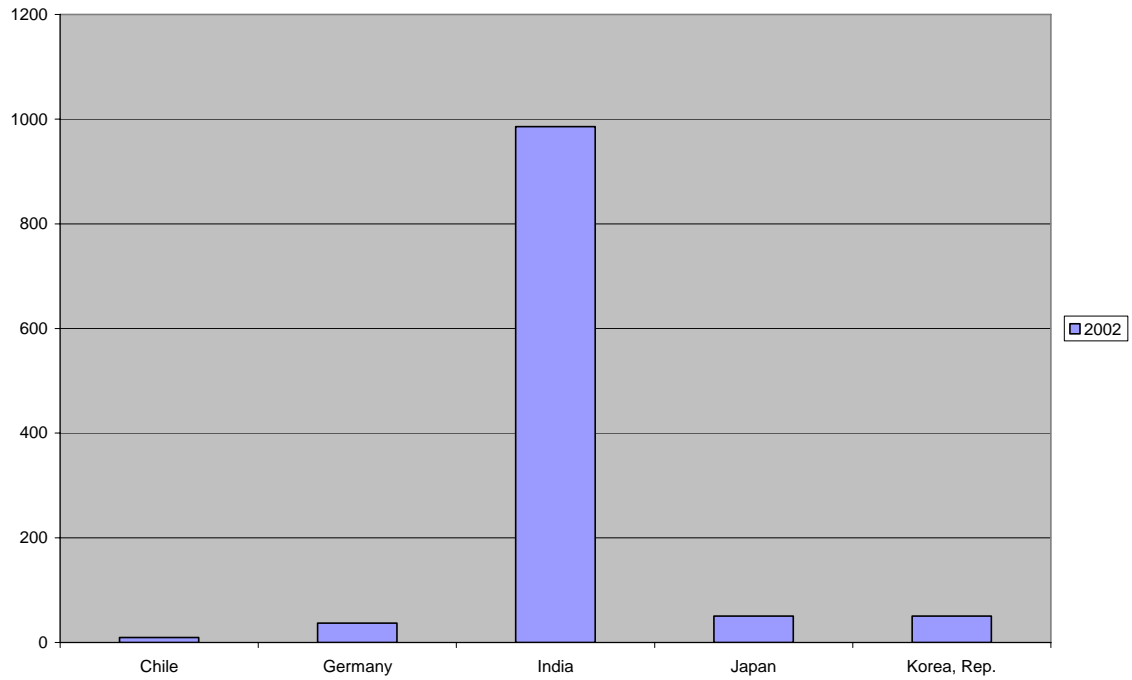
Railways, passengers carried (passenger-km)



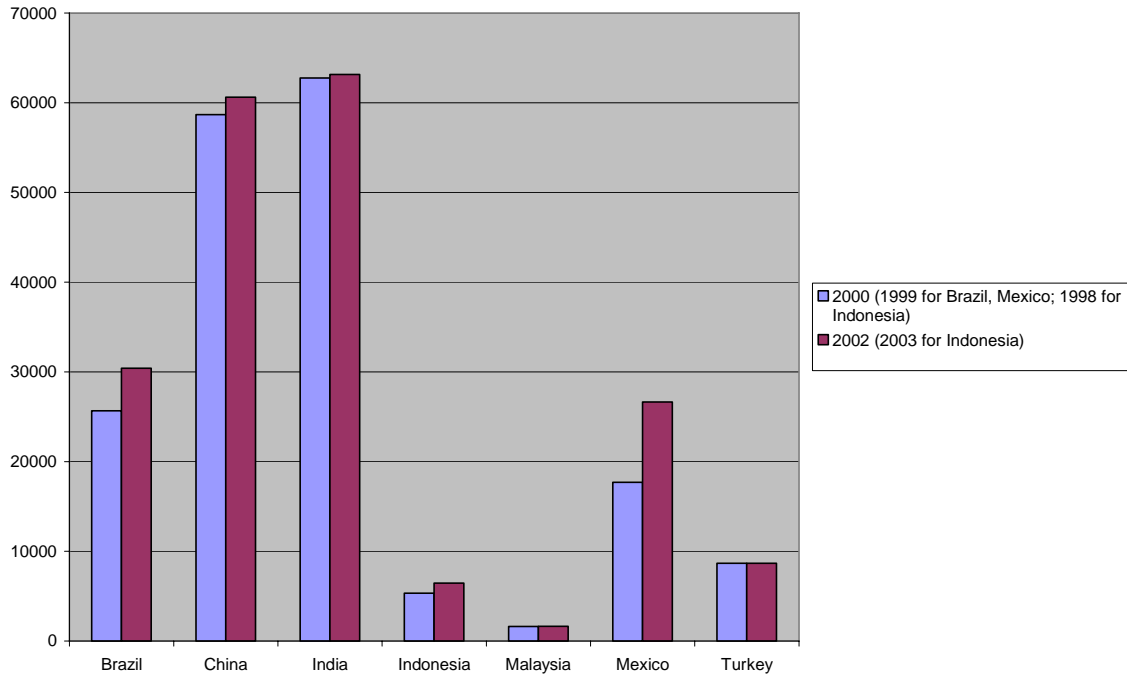
**Railways, passengers carried per GDP (passenger-km per thous const 2000 \$)
2002 (2003 for Indonesia)**



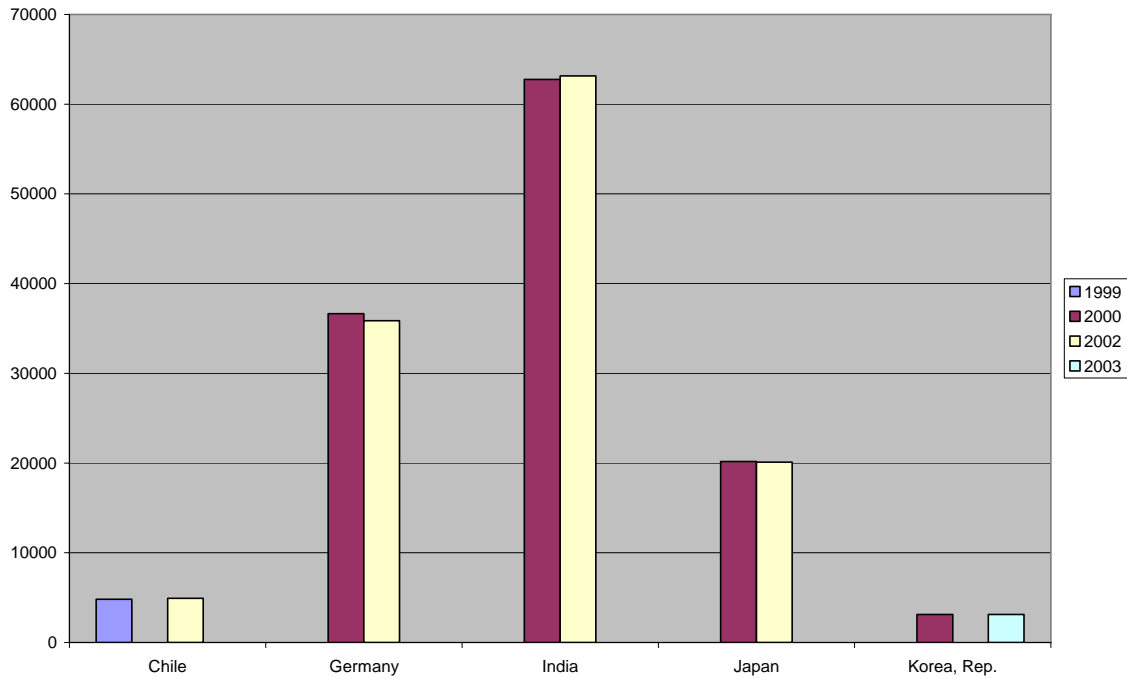
Railways, passengers carried per GDP (passenger-km per thous const 2000 \$)



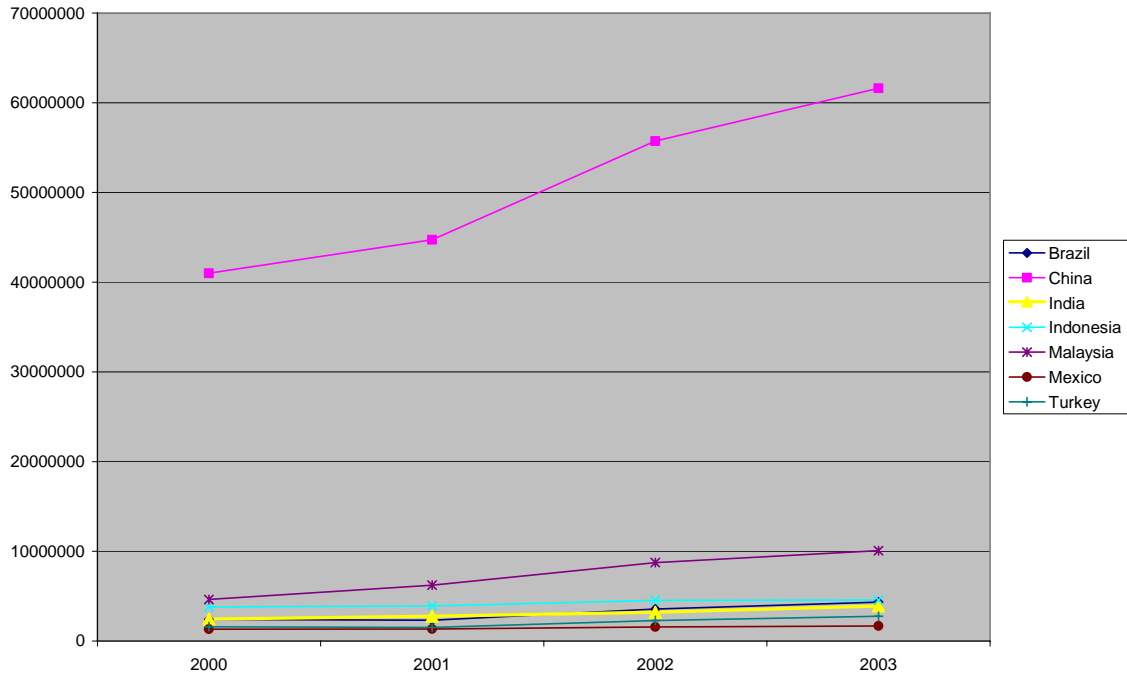
Rail lines (total route-km)



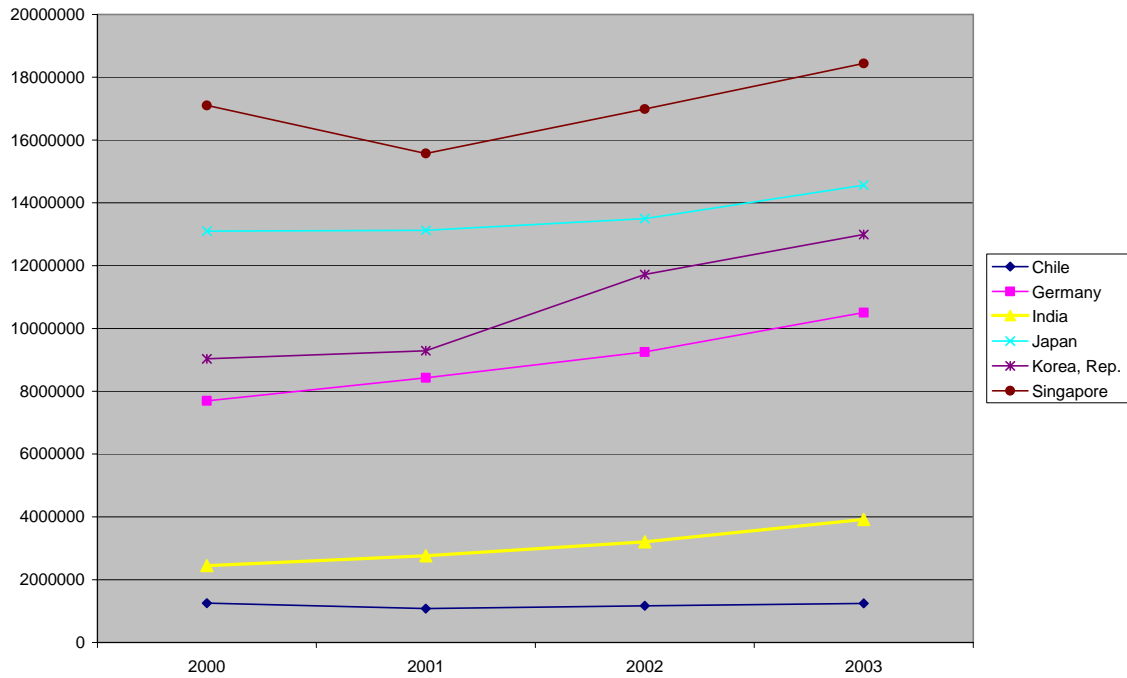
Rail lines (total route-km)



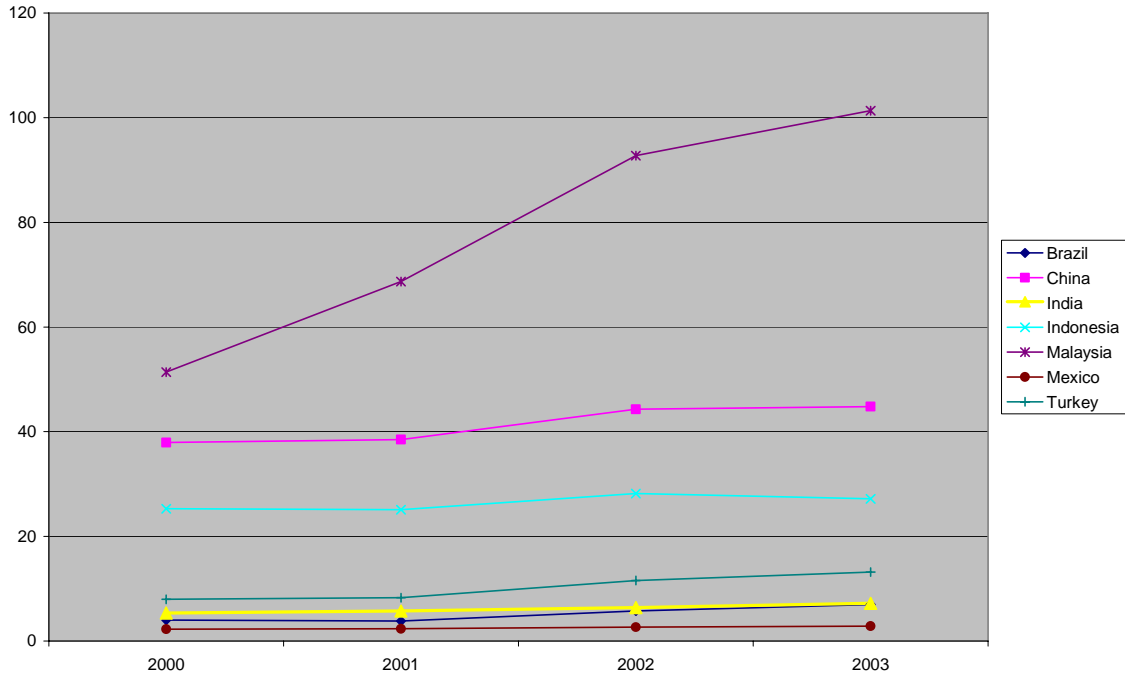
Container port traffic (TEU: 20 foot equivalent units)



Container port traffic (TEU: 20 foot equivalent units)



Container port traffic per GDP (TEU per mn const 2000 \$)



Container port traffic per GDP (TEU per mn const 2000 \$)

